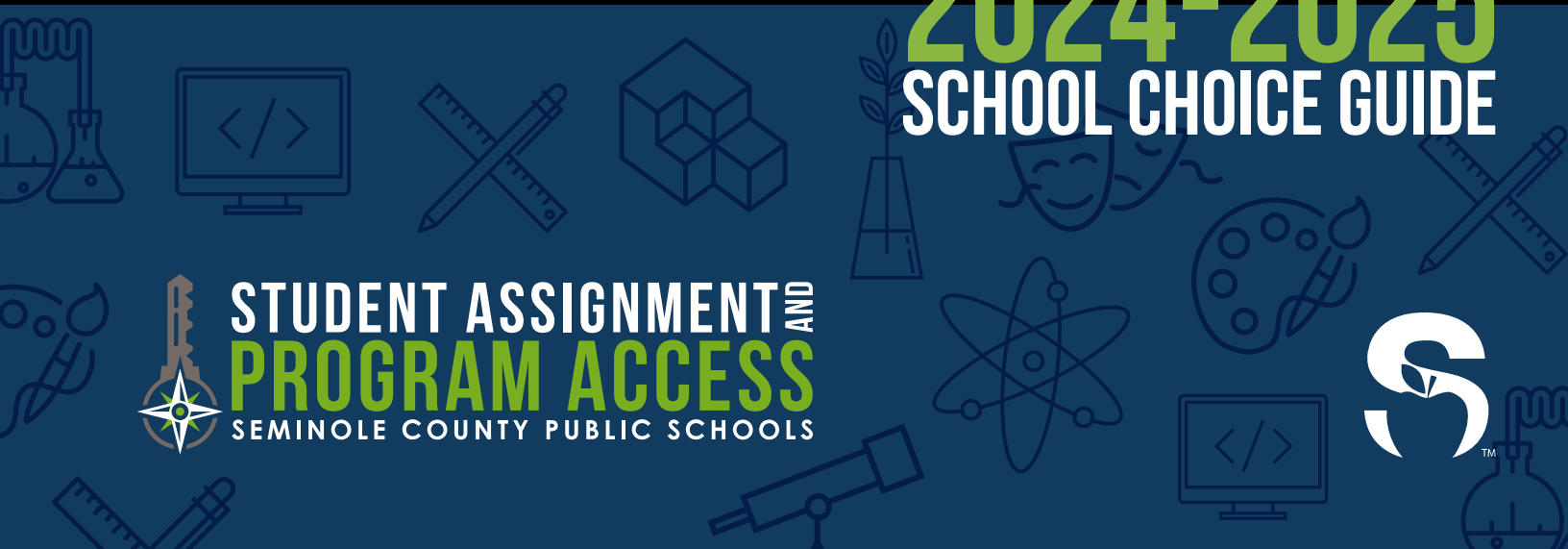




2024-2025

SCHOOL CHOICE GUIDE



 **STUDENT ASSIGNMENT AND**
PROGRAM ACCESS
SEMINOLE COUNTY PUBLIC SCHOOLS



TABLE OF CONTENTS

Information Expo & Magnet Nights	1
ELEMENTARY SCHOOLS	2
Elementary Region School Zones	3
Region School Zone Checklist: How Do I Apply?	4
Elementary School Magnets	5-11
Elementary Transfer Checklist: How Do I Apply?	12
MIDDLE SCHOOLS	13
Middle School Magnets	14-19
SCPS Pre-IB Preparatory Program	15
Middle School Magnets Checklist: How Do I Apply?	20
HIGH SCHOOLS	21
High School Magnets	22-27
High School Magnets Checklist: How Do I Apply?	28
High School Programs of Emphasis	29-30
K-12 School Transfer Options	31
Seminole County Virtual School	32

IMPORTANT DATES

OCTOBER 1 – DECEMBER 1, 2023:

Middle School & High School Magnet Application Period

JANUARY 1 – MARCH 1, 2024:

Elementary School Magnet & Elementary Region School Zone Application Period

FEBRUARY 1, 2024:

Transfer Application Period Opens

APRIL 15 – MAY 15, 2024:

On-Time Controlled Open Enrollment Application Period

VISIT

<https://scpsflc.scriborder.com>

TO APPLY



A NOTE FROM THE SUPERINTENDENT

As a premiere national school district, SCPS takes tremendous pride in providing a variety of meaningful courses and programs. SCPS has long been recognized for a robust and ever-evolving e-Pathways program (Educational Pathways) that provides students with opportunities to prepare for post-secondary life that include:

- enrollment in college, career and technical programs (CTE) and university,
- enlisting in service organizations, including our military, police and fire organizations, and
- employment right out of high school.

Participation in these SCPS programs helps our students determine their “E” and prepare for life after PreK-12 education.

The Student Assignment and Program Access (SAPA) department facilitates access to these opportunities ensuring students and families know about the available choices. SAPA also connects students with personalized learning that helps them discover their passions and provides them with chances to explore their own unique gifts and talents through a customized learning pathway.

The School Board and I are committed to providing every student with the opportunity to obtain a world-class education that will give students the ability to pursue their dreams so that they contribute to our community and ensure the quality of life that is, and has been, a hallmark of Seminole County. Our students are the next generation of thinkers, builders, healers, and creators. Please be sure to review the multiple offerings on the SAPA website, as well as each school’s unique programs so that you and your student take advantage of all SCPS continues to offer.

Serita Beamon,
Superintendent
Seminole County Public Schools



EXPLORE



UNIQUE PROGRAMS

MIDDLE/HIGH SCHOOL MAGNET EXPO	OCTOBER 12, 2023	6:00 PM TO 8:00 PM	LYMAN HIGH SCHOOL 865 S. Ronald Reagan Blvd, Longwood, FL 32750
---------------------------------------	-------------------------	---------------------------	--

ELEMENTARY SCHOOL MAGNET NIGHTS

Goldsboro Elementary Math, Science, & Technology Magnet School	Tuesday, February 27, 2024	6:00 PM
Hamilton Elementary School of Engineering & Technology	Thursday, February 22, 2024	6:00 PM
Idyllwilde Elementary Future Ready Academy	Tuesday, January 23, 2024	6:00 PM
Midway Elementary School of the Arts	Tuesday, January 30, 2024	6:00 PM
Pine Crest Elementary Magnet School of Innovation	Thursday, January 25, 2024	5:30 PM
Wicklów Elementary Magnet School for Global Pathways	Thursday, February 1, 2024	6:30 PM

MIDDLE SCHOOL MAGNET NIGHTS

Millennium Middle School Fine Arts & Communication Magnet	Wednesday, October 25, 2023	6:00 PM
Milwee Middle School Pre-Engineering Magnet	Thursday, November 16, 2023	6:30 PM
Sanford Middle School Math, Science, & Technology Magnet	Thursday, November 2, 2023	6:00 PM
South Seminole Academy of Leadership, Law, & Advanced Studies	Tuesday, November 14, 2023	6:00 PM

HIGH SCHOOL MAGNET NIGHTS

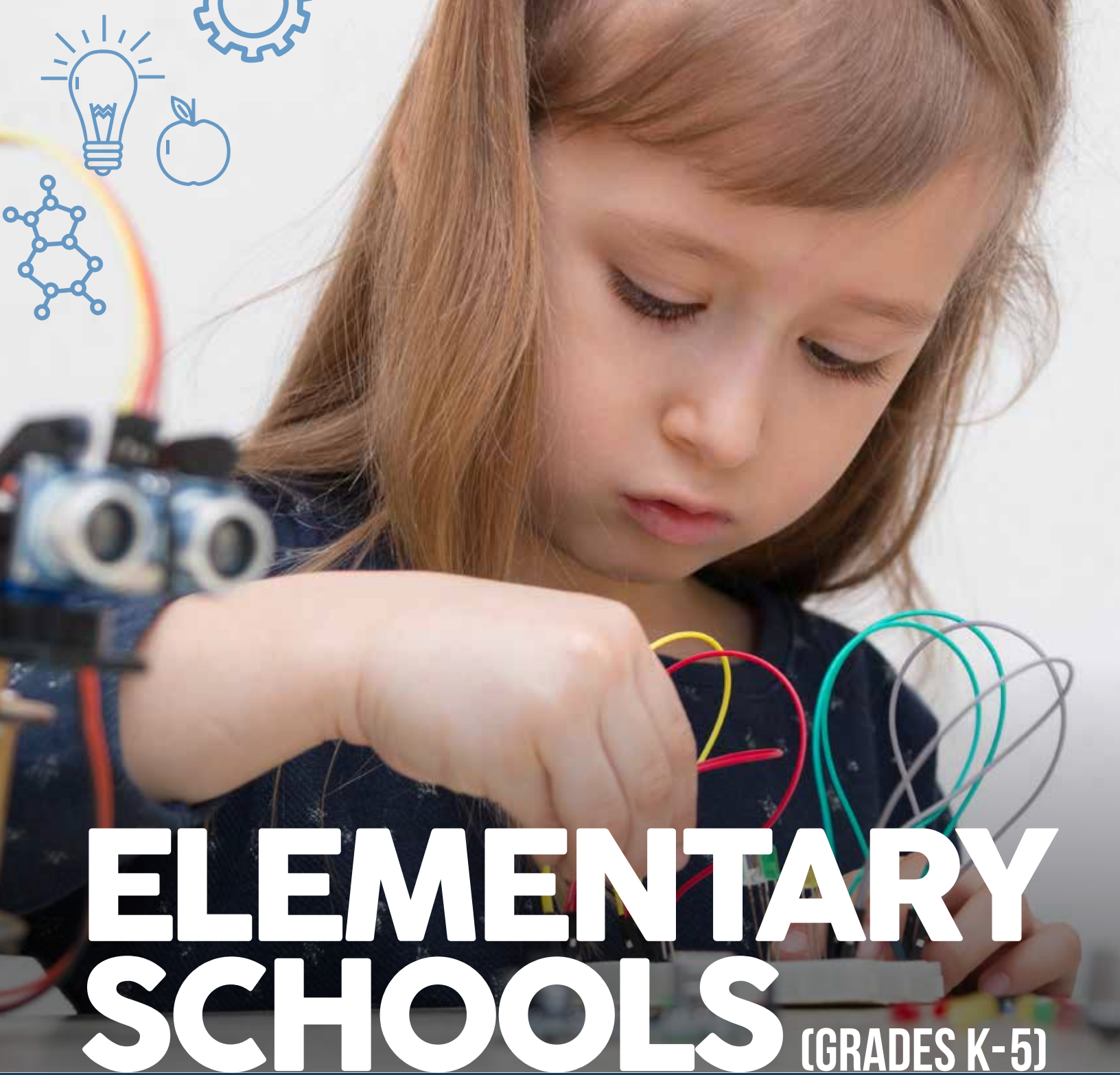
Academy of Health Careers at Seminole High School	Monday, November 6, 2023	6:00 PM
Academy of Engineering at Lyman High School	Wednesday, November 8, 2023	6:00 PM
Crooms Academy of Information Technology	Wednesday, November 15, 2023	5:00 PM
IB Diploma Program at Seminole High School	Tuesday, November 7, 2023	6:00 PM
IB Diploma Program at Winter Springs High School	Tuesday, October 24, 2023	6:00 PM

FOR SCHOOL TOURS, PLEASE CONTACT THE INDIVIDUAL SCHOOL.

Elementary School Magnet contact information page 5.

Middle School Magnet contact information page 14.

High School Magnet contact information page 22.



ELEMENTARY SCHOOLS (GRADES K-5)

Student Assignment Processes and School Choice Options

Seminole County Public Schools manages a wide variety of student assignment and school choice transfer options in an effort to accommodate family choice to the maximum extent possible while also seeking to minimize overcrowded conditions, promote and maintain diverse student enrollment, support the implementation of ePathways initiatives to the maximum extent possible, and maintain compliance with any state mandates. These processes and options are outlined over the next several pages.



JANUARY 1 –
MARCH 1, 2024
On Time Application Period.

ELEMENTARY REGION SCHOOL ZONES

Students residing in Region 1, Region 2, or Region 3 are assigned to any one of the three schools by the Student Assignment & Program Access Department. Families must receive a school assignment from the Student Assignment & Program Access Department before they can enroll at a school.

- Parents/Guardians residing in an elementary region school zone will designate by rank order their preference for their student among the schools located within the region.
- Student assignment will be based upon the following criteria – preference zone, full time site-based employee, sibling placement, socioeconomic diversity, family preference, and capacity.
- Transportation is provided to all students who live more than 2 miles from their assigned school.

There is a sibling link for students to attend the same school that his/her sibling currently attends and will continue to attend. The new student is required to submit an application during the on time application period. Current students do not need to re-apply.

REGION 1

Bentley Elementary
Idyllwilde Elementary
Future Ready Academy
Wilson Elementary

REGION 2

Bentley Elementary
Crystal Lake Elementary
Wicklow Elementary
*Magnet School for
Global Pathways*

REGION 3

Hamilton Elementary
*School of Engineering
& Technology*
Midway Elementary
School of the Arts
*Pine Crest Elementary
Magnet School of Innovation*



How to Apply for an **ELEMENTARY REGION SCHOOL ZONE**

STEP

1

SUBMIT THE REGION SCHOOL APPLICATION VIA THE ONLINE APPLICATION SYSTEM, BASED UPON YOUR ADDRESS.

- Apply online at <https://scpsflc.scriborder.com>
- Confirmation email will be sent upon submission.

STEP

2

RECEIVE A SCHOOL ASSIGNMENT EMAIL.

- On time lottery applications = school assignment email sent in late March/early April each year.
- Late/ongoing applications = school assignment email sent within 48 hours.
- If assigned to your second or third choice school, a family must enroll at the assigned school in order to remain on the waitlist for their first choice school.

STEP

3

REVIEW THE SCHOOL EMAIL, ACCEPT THE ASSIGNMENT FOR ENROLLMENT.

- Accept your child's region school assignment by the stated deadline. **Note: If the region school assignment is rejected, the student will be removed from the region school first choice waitlist and a new region school application must be submitted.**
- If the parents/guardians do not enroll their child by the stated deadline, they will be required to submit a new region school application.

STEP

4

COMPLETE ENROLLMENT PROCESS FOR ASSIGNED REGION SCHOOL.

- Visit **Enrolling Your Student** online: <https://bit.ly/SCPSEnrollmentInfo>
- If the parents/guardians do not enroll their child by the stated deadline, they will be required to submit a new region school application.

JANUARY 1 –
MARCH 1, 2024

On Time Application Period

There is a sibling link for students to attend the same school that his/her sibling currently attends and will continue to attend. The new student is required to submit an application during the on time application period. Current students do not need to re-apply.



ELEMENTARY SCHOOL MAGNETS

- Magnet Schools & Magnet Programs are high-quality and innovative educational programs that specialize in a particular theme and are open to all Seminole County students.
- Transportation is provided to all students who live more than 2 miles from the school/program.
- Program Links are available from specified elementary schools to specified middle schools per School Board Policy 5120. Applications must be submitted during the on time application period in order for the specified link to be applied.



GOLDSBORO ELEMENTARY Math, Science, & Technology Magnet School

1300 West 20th St. • Sanford, FL
407.320.5850
www.goldsboro.scps.k12.fl.us

PROGRAM LINK TO SANFORD
MIDDLE SCHOOL



HAMILTON ELEMENTARY School of Engineering & Technology

1501 East 8th St. • Sanford, FL
407.320.6050
www.hamilton.scps.k12.fl.us

PROGRAM LINK TO MILWEE
MIDDLE SCHOOL



IDYLLWILDE ELEMENTARY Future Ready Academy

430 Vihlen Rd. • Sanford, FL
407.320.3750
www.idyllwilde.scps.k12.fl.us



MIDWAY ELEMENTARY School of the Arts

2368 Brisson Ave. • Sanford, FL
407.320.5950
www.midway.scps.k12.fl.us

PROGRAM LINK TO MILLENNIUM
MIDDLE SCHOOL



PINE CREST ELEMENTARY Magnet School of Innovation

405 West 27th St. • Sanford, FL
407.320.5450
www.pinecrest.scps.k12.fl.us



WICKLOW ELEMENTARY Magnet School for Global Pathways

100 Placid Lake Dr. • Sanford, FL
407.320.1250
www.wicklow.scps.k12.fl.us

THE UNIVERSE IS WAITING!



GOLDSBORO ELEMENTARY
Magnet School's academic program is driven by problem-solving, discovery, and exploratory learning through integrated STEM experiences.

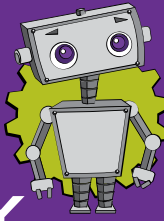
Students engage in real-world experiences within our unique lab spaces including The Kids Space Center, Bio-Science Lab, Robotics and Computer Coding Lab, Mathematics Lab, Virtual Reality Lab, and Maker Space to stretch their imagination and work collaboratively to solve problems through Science, Technology, Engineering, and Mathematics.

1300 West 20th Street | Sanford, FL 32771 | 407-320-5850 | www.goldsboro.scps.k12.fl.us

6 Apply at [HTTPS://SCPSFLC.SCRIBORDER.COM](https://scpsflc.scribborder.com)

SCHOOL OF ENGINEERING AND TECHNOLOGY

HAMILTON ELEMENTARY



DEVELOPING
FUTURE ENGINEERS,
CRITICAL THINKERS
AND THE NEXT
GENERATION OF
INVENTORS

ENGINEERING THE FUTURE TODAY

Engineering and technology are integrated into language arts, mathematics, science and special area standards through engineering design units created exclusively for Hamilton students.

Program incorporates *Engineering is Elementary*® and Lego® Robotics into the K-5 academic experience.

Students engineer real-world designs including playgrounds, planetary rovers, rollercoasters, racecars, windmills, 3D printed prototypes, light mazes, weather gadgets, zip lines, and more.





**IDYLLWILDE
ELEMENTARY**
Future Ready Academy

IGNITING INQUIRY, INSPIRING LEADERS.



Idyllwilde Elementary Future Ready Academy is authorized to offer the prestigious **INTERNATIONAL BACCALAUREATE PRIMARY YEARS PROGRAMME.**

The IB PYP challenges students to think for themselves and take responsibility for their learning as they **EXPLORE** and **SEEK SOLUTIONS** to **LOCAL AND GLOBAL ISSUES.**

Our **WORLD-CLASS MAGNET PROGRAM** gives students the opportunity to receive **INQUIRY DRIVEN INSTRUCTION** and leadership skills through Franklin Covey's Leader in Me® model to create a **CULTURE OF STUDENT EMPOWERMENT.**



430 Vihlen Road | Sanford, FL 32771 | 407-320-3750 | www.idyllwilde.scps.k12.fl.us



Where Excellence Takes Center Stage.



Midway is the only Artful Learning School in the state of Florida and 1 of only 17 in the country.

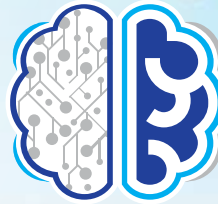
ARTFUL LEARNING infuses arts into all academic areas and builds creativity in the learning process.

Students become performers and explore careers through unique studios specializing in dance, instrumental band, vocal music, orchestra, visual art, and computer science/coding.

The Annual Broadway show allows students to experience all facets of theatre in a full-scale setting: stage presence, acting, singing, dancing, lighting, set design, and audio/visual.

2368 Brisson Avenue | Sanford, FL 32771 | 407-320-5950 | www.midway.scps.k12.fl.us

Apply at [HTTPS://SCPSFLC.SCRIBORDER.COM](https://scpsflc.scriborder.com)



**Pine Crest
Elementary**
School of Innovation

SHAPING THE FUTURE THROUGH INNOVATION...

Students at Pine Crest Elementary Magnet School of Innovation:



IMAGINE

by harnessing the power of teamwork and a design thinking framework to effectively explore new ideas.



CREATE

by leveraging technology and collaboratively engaging in problem solving to generate concepts and bring solutions to life.



CONNECT

with others in our school, our local community, across the state, and/or on a national scale via self-directed learning projects to solve student-identified issues.

Students experience Computer Science immersion, which lays the foundation for pursuing high demand jobs of tomorrow.

eSports and Phab Labs combine Computer Science and problem-solving opportunities, which transitions students from just players into creators.

Innovative school campus beams with state-of-the-art collaborative spaces and technology.



405 West 27th Street | Sanford, FL 32773 | 407-320-5450 | www.pinecrest.scps.k12.fl.us

EXPLORE WICKLOW, EXPLORE THE WORLD.



Wicklow Elementary Magnet School for Global Pathways is an authorized IB World School where students have the opportunity to learn a second language through our Dual Language Immersion Program or by studying Spanish/French in our World Language Program.



The ONLY SCPS elementary school that offers 2 world languages (French and Spanish).

Become a globally-minded citizen equipped with the strategies, knowledge, and skills needed to pursue excellence in our modern society.

Investigate and connect firsthand with cultures of the world through language immersion, partnerships, and state-of-the-art technology.

Learn to listen, speak, read, and write in two languages; achieve academic excellence through an international approach; and develop cultural awareness and sensitivity.

100 Placid Lake Drive | Sanford, FL 32773 | 407.320.1250 | www.wicklow.scps.k12.fl.us

Apply at [HTTPS://SCPSFLC.SCRIBORDER.COM](https://scpsflc.scriborder.com)



For families residing in elementary region school zones, magnet placement will **OVERRIDE** region school zone assignment and result in region school zone applications being withdrawn.

How to Apply for an **ELEMENTARY SCHOOL MAGNET**

STEP

1

DETERMINE IF YOUR CHILD IS ELIGIBLE TO APPLY FOR A MAGNET SCHOOL.

- If your family is zoned to an elementary region school zone (Region 1, Region 2, Region 3), you would access the magnet schools **in your school zone via the elementary region school zone application.**
- If your family is zoned to an elementary region school zone, you would access the magnet schools **outside of your school zone via the elementary magnet application.**
- For families residing in elementary region school zones, **magnet placement outside the region will override region school zone assignment and will result in region school zone applications being withdrawn.**
- All Seminole County families living in single school zones (i.e. - Lake Mary, Heathrow, Wekiva, Stenstrom, etc.) would access the magnet schools **via the elementary magnet application.**

STEP

2

SUBMIT THE MAGNET SCHOOL APPLICATION VIA THE ONLINE APPLICATION SYSTEM.

- Apply online at <https://scpsflc.scriborder.com>.
- Students may only submit one magnet school application.
- Confirmation email will be sent upon submission.

STEP

3

NOTIFICATION EMAIL.

- On time lottery applications = school assignment email sent in late March/early April each year.
- Based upon limited seat availability, some on time applicants may receive a wait list email.

STEP

4

ACCEPT YOUR CHILD'S MAGNET SCHOOL ASSIGNMENT OR WAIT LIST SEAT VIA THE ONLINE APPLICATION SYSTEM.

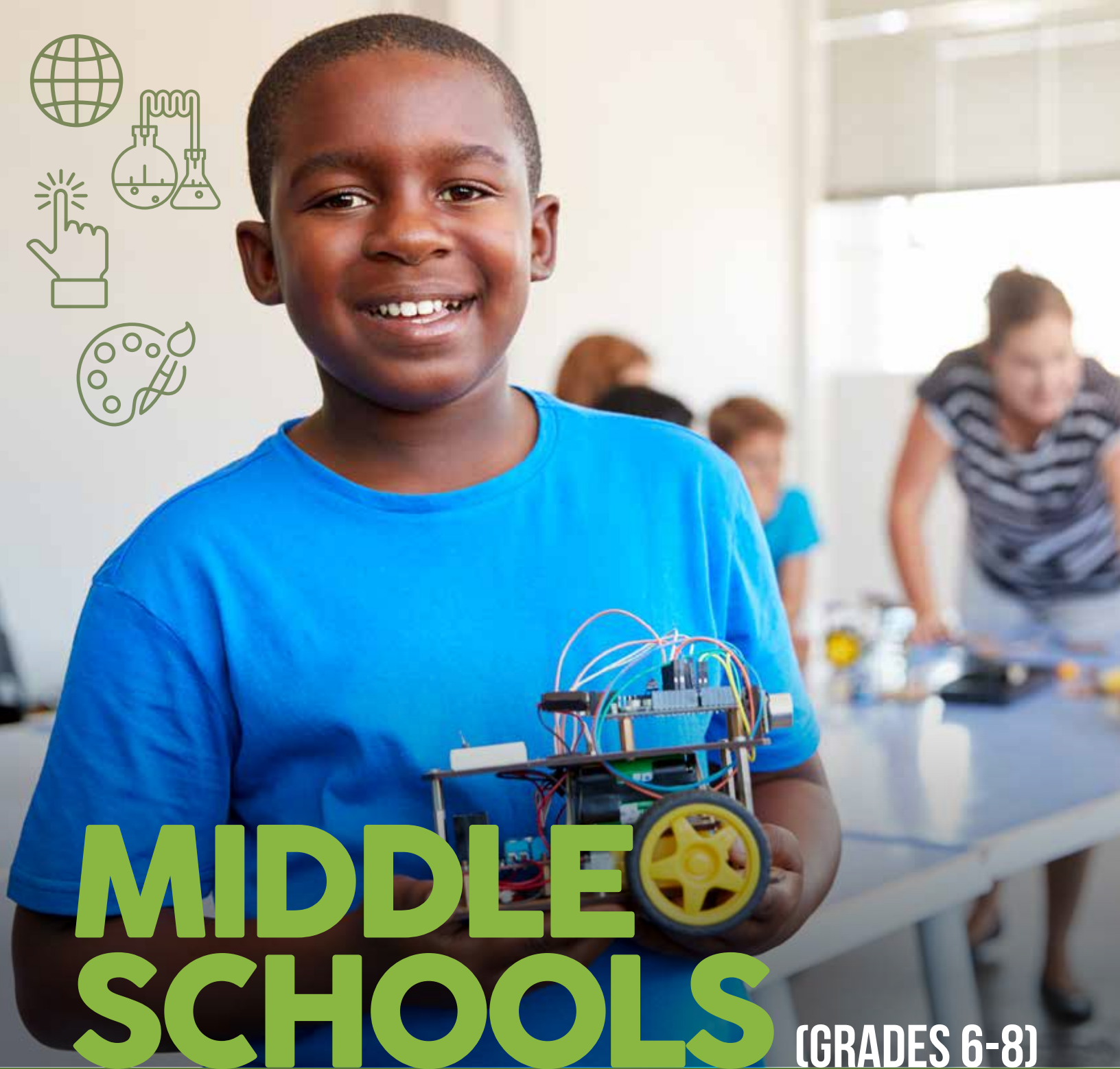
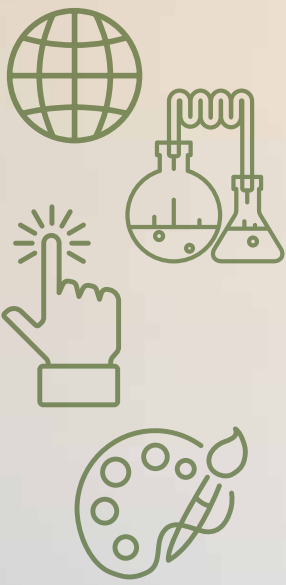
- Log into your parent/guardian account at <https://scpsflc.scriborder.com>
- Accept your child's approved magnet school placement by the stated deadline.

STEP

5

IF ACCEPTED INTO A MAGNET SCHOOL, FAMILIES MUST COMPLETE THE APPROPRIATE STEPS FOR ENROLLMENT.

- Visit **Enrolling Your Student** online: <https://bit.ly/SCPSEnrollmentInfo>
- If the parents/guardians do not enroll their child by the stated deadline, they will be required to submit a new magnet school application and their child will be placed on the wait list.



MIDDLE SCHOOLS (GRADES 6-8)

Student Assignment Processes and School Choice Options

Seminole County Public Schools manages a wide variety of student assignment and school choice transfer options in an effort to accommodate family choice to the maximum extent possible while also seeking to minimize overcrowded conditions, promote and maintain diverse student enrollment, support the implementation of ePathways initiatives to the maximum extent possible, and maintain compliance with any state mandates. These processes and options are outlined over the next several pages.

OCTOBER 1 –
DECEMBER 1,
2023

On Time Application Period

There is a sibling link for students to attend the same school that his/her sibling currently attends and will continue to attend. The new student is required to submit an application during the on time application period. Current students do not need to re-apply.



MIDDLE SCHOOL MAGNETS

- Magnet Schools & Magnet Programs are high-quality and innovative educational programs that specialize in a particular theme and are open to all Seminole County students.
- Transportation is provided to all students who live more than 2 miles from the school/program.
- Program Links are available from specified middle schools to specified high schools per School Board Policy 5120. Applications must be submitted during the on time application period in order for the specified link to be applied.



MILLENNIUM MIDDLE SCHOOL Fine Arts and Communication Magnet

Offering SCPS Pre-IB Preparatory Program
2330 East SR 46 • Sanford, FL
407-320-6550
www.millennium.scps.k12.fl.us



SANFORD MIDDLE SCHOOL Math, Science, and Technology Magnet

Offering SCPS Pre-IB Preparatory Program
1700 South French Ave. • Sanford, FL
407-320-6150
www.sanford.scps.k12.fl.us



MILWEE MIDDLE SCHOOL Pre-Engineering Magnet

Offering SCPS Pre-IB Preparatory Program
1341 South Ronald Reagan Blvd. • Longwood, FL
407-746-3850
www.milwee.scps.k12.fl.us

**PROGRAM LINK TO THE ACADEMY OF
ENGINEERING AT LYMAN HIGH SCHOOL**



SOUTH SEMINOLE ACADEMY Leadership, Law, & Advanced Studies

Offering SCPS Pre-IB Preparatory Program
101 South Winter Park Dr. • Casselberry, FL
407-746-1350
www.ssa.scps.k12.fl.us



SCPS PRE-IB PREPARATORY PROGRAM*

PREPARATION FOR THE HIGH SCHOOL INTERNATIONAL BACCALAUREATE PROGRAM

The SCPS Pre-IB Preparatory Program offers an extensive course of study in math, science, world language, social studies, and language arts with an emphasis on independent study, in-depth learning, and accelerated curriculum requirements.

Out of zone students interested in participating in the SCPS Pre-IB Preparatory Program need to make sure they complete the correct magnet application by applying for their magnet school of choice + SCPS Pre-IB Program Track.

Students zoned to the four middle school magnets (based upon their address) may elect to participate in the SCPS Pre-IB Preparatory Program when completing their middle school course selection in the spring.

Students who finish 8th grade in the SCPS Pre-IB Program Track at any of the four middle school magnets and apply during the on time application period for the International Baccalaureate Diploma Program at Seminole High School or Winter Springs High School (eligibility determined by zoned high school) will have a priority for placement.



**Seminole County Public Schools Pre-IB Preparatory Program was designed by and for Seminole County Public Schools and is not affiliated with the International Baccalaureate Organization.*



Setting the Stage for Future Success



From musical theater to ballet, puppetry to French, TV broadcasting to web design, Millennium Middle School Fine Arts & Communication Magnet School offers unique opportunities to explore, discover, and unleash individual potential.



Millennium is the ONLY Seminole County middle school

specially designed as a visual and performing arts magnet, incorporating arts into core curriculum which helps improve academic performance and enhances inquiry, critical thinking, and problem solving skills.



Performing Arts events allow students to showcase their talents in front of live audiences in areas such as theatre, dance, chorus, band, guitar, and orchestra.

2330 East SR 46 | Sanford, FL 32771 | 407-320-6550 | www.millennium.scps.k12.fl.us



Milwee Middle School
Pre-Engineering Magnet

Engineering Your Future

We provide our students with an array of extracurricular opportunities and unique field trips to broaden their knowledge of engineering.

We are **ENGINEERING YOUR FUTURE** at Milwee Middle School by providing an innovative, pre-engineering curriculum that challenges **ALL** students.

Milwee is the ONLY SCPS middle school to offer Project Lead the Way (PLTW) which engages students in hands-on, collaborative problem solving focused on real-world challenges.

1341 South Ronald Reagan Boulevard | Longwood, FL 32750 | 407-746-3850 | www.milwee.scps.k12.fl.us

Apply at [HTTPS://SCPSFLC.SCRIBORDER.COM](https://scpsflc.scriborder.com)



Where Exploration Leads to Innovation

At Sanford Middle School Math, Science, & Technology Magnet we aim to develop students to be well-rounded in **academics** and **extracurricular activities**.

Students work in a safe and **supportive learning environment** and are able to **explore** a variety of courses in **STEM fields** such as:

Pre-Medical, Gaming, Pre-Veterinarian, Herpetology, Physics, Aeronautics, Web Development, Biotechnology, Engineering Design, Robotics, Marine Biology, Public Relations & Branding, and many more!

Partnerships with the **Central Florida Zoo** and **local businesses** allow students the opportunity for **field studies** in a real world environment with **job shadowing and mentoring** in a chosen careers fields.



1700 South French Avenue | Sanford, FL 32771 | 407-320-6150 | www.sanford.scps.k12.fl.us



UNLEASH YOUR GIFTS AND TALENTS

Seminole Academy is the first middle school in the world to have been honored as a Franklin Covey Leader In Me Lighthouse School, demonstrating a leadership model of excellence emulated by schools locally, nationally, and internationally.

Advanced learning opportunities include the Seminole County Public Schools Pre-IB Prep Program, multiple world languages, Gifted instruction, and high school credit opportunities.

Three year sequence of law studies, mock trials, field trips to government agencies, and guest speakers from the legal community provide students with unique opportunities to explore career pathways in law.

Over 35 Leadership Academies provide students with voice and choice to explore and develop their talents.



101 South Winter Park Drive | Casselberry, FL | 407-746-1350 | www.ssa.scps.k12.fl.us

Apply at [HTTPS://SCPSFLC.SCRIBORDER.COM](https://scpsflc.scribborder.com)



How to Apply for a **MIDDLE SCHOOL MAGNET**

STEP

1

DETERMINE IF YOUR CHILD IS ELIGIBLE TO APPLY FOR A MAGNET SCHOOL.

- If your family is zoned to attend a middle school magnet, based upon your address, you do not need to apply for that school.
- If your family is not zoned to attend the middle school magnet of your choice, proceed to the next step.

STEP

2

SUBMIT THE APPROPRIATE MAGNET SCHOOL APPLICATION VIA THE ONLINE APPLICATION SYSTEM.

- Apply online at <https://scpsflc.scriborder.com>.
- Please note which application you are completing (regular magnet or magnet + SCPS Pre-IB Program Track).
- Students may only apply to one magnet program.
- Confirmation email will be sent upon submission.

STEP

3

RECEIVE A MAGNET SCHOOL NOTIFICATION EMAIL.

- On time lottery applications = school assignment email sent in mid-January each year.
- Based upon limited seat availability, some on time applicants may receive a wait list email.

STEP

4

ACCEPT YOUR CHILD'S MAGNET SCHOOL ASSIGNMENT OR WAIT LIST SEAT VIA THE ONLINE APPLICATION SYSTEM.

- Log into your parent/guardian account at <https://scpsflc.scriborder.com>.
- Accept your child's approved magnet school placement by the stated deadline.

STEP

5

IF ACCEPTED INTO A MAGNET SCHOOL, FAMILIES MUST COMPLETE THE APPROPRIATE STEPS FOR ENROLLMENT.

- Visit **Enrolling Your Student** online: <https://bit.ly/SCPSEnrollmentInfo>.
- If the parents/guardians do not enroll their child by the stated deadline, they will be required to submit a new magnet school application and their child will be placed on the wait list.





HIGH SCHOOLS (GRADES 9-12)

Student Assignment Processes and School Choice Options

Seminole County Public Schools manages a wide variety of student assignment and school choice transfer options in an effort to accommodate family choice to the maximum extent possible while also seeking to minimize overcrowded conditions, promote and maintain diverse student enrollment, support the implementation of ePathways initiatives to the maximum extent possible, and maintain compliance with any state mandates. These processes and options are outlined over the next several pages.

OCTOBER 1 –
DECEMBER 1,
2023

On Time Application Period

There is a sibling link for incoming 9th grade students to attend the same program that his/her sibling currently attends and will continue to attend. The new student is required to submit an application during the on-time application period. Current students do not need to re-apply.



HIGH SCHOOL MAGNETS

- Magnet Schools & Magnet Programs are high-quality and innovative educational programs that specialize in a particular theme and are open to all Seminole County students who meet the eligibility requirements.
- Transportation is provided to all students who live more than 2 miles from the school/program.
- Acceptance into a magnet school/magnet program for students applying for grade ten and above is contingent upon an administrative review of their transcripts.



ACADEMY OF HEALTH CAREERS AT SEMINOLE HIGH SCHOOL

2701 Ridgewood Ave. • Sanford, FL
407.320.5050
www.seminolehs.scps.k12.fl.us



INTERNATIONAL BACCALAUREATE DIPLOMA PROGRAM AT SEMINOLE HIGH SCHOOL

2701 Ridgewood Ave. • Sanford, FL
407-320-5050
www.seminolehs.scps.k12.fl.us



ACADEMY OF ENGINEERING AT LYMAN HIGH SCHOOL

865 South Ronald Reagan Blvd.
Longwood, FL
407-746-2050
www.lyman.scps.k12.fl.us



INTERNATIONAL BACCALAUREATE DIPLOMA PROGRAM AT WINTER SPRINGS HIGH SCHOOL

130 Tuskawilla Rd. • Winter Springs, FL
407-320-8750
www.winterspringshs.scps.k12.fl.us



CROOMS ACADEMY OF INFORMATION TECHNOLOGY

2200 West 13th St. • Sanford, FL
407-320-5750
www.cait.scps.k12.fl.us

Students applying for the IB Program zoned for Lake Brantley, Lake Mary, Lyman, & Seminole High School may only apply for Seminole High School. Students applying for the IB Program zoned for Hagerty, Lake Howell, Oviedo, & Winter Springs High School may only apply for Winter Springs High School.



EDUCATING THE FUTURE OF HEALTHCARE



Seminole High School is home to the Academy of Health Careers, a magnet program offering a **comprehensive academic program** with either a **patient care** focus or a **biomedical research** focus.

The rigorous academic coursework, authentic **on-site lab facilities**, off-site **clinical experiences**, and staff of licensed nurses and doctors make the Health Academy a **unique opportunity** to prepare for a career in the **healthcare industry**.



The curriculum prepares students for employment in health care through the opportunity to **earn nationally recognized industry certifications** and **dual enrollment/Career Pathways credit** at Seminole State College.

Students will earn industry certifications which will enable them to be **work-force ready** upon graduation, or give them an advantage in **pursuing higher healthcare education**.

Nationally Recognized Industry Certifications



CNA
Certified Nursing Assistant



EKG
Electrocardiograph Technician



CMAA
Certified Medical Administrative Assistant



BioTech
Biomedical Technician Assistant

2701 Ridgewood Avenue | Sanford, FL 32773 | 407-320-5050 | www.seminolehs.scps.k12.fl.us

Apply at [HTTPS://SCPSFLC.SCRIBORDER.COM](https://scpsflc.scriborder.com)



**ACADEMY OF
ENGINEERING**
LYMAN HIGH SCHOOL

INNOVATING TOMORROW



Lyman Academy of Engineering is a magnet program that prepares students to be innovative and productive leaders in science, technology, engineering, and mathematics (STEM) who make meaningful contributions to our world.

Lyman Academy of Engineering offers industry certification testing for all students which can lead to additional opportunities for post-secondary employment.

Students choose to explore an area of interest including aerospace engineering, digital electronics, civil engineering and architecture, and environmental sustainability.

**RENOWNED PROJECT
LEAD THE WAY
(PLTW) CURRICULUM
EMPHASIZES CRITICAL
THINKING, CREATIVITY,
INNOVATION, AND
REAL-WORLD
PROBLEM SOLVING.**

865 South Ronald Reagan Boulevard | Longwood, FL 32750 | 407-746-2050 | www.lyman.scps.k12.fl.us



Cutting Edge INNOVATION in a TECHNOLOGY RICH Environment

SPECIALIZATIONS



NETWORK SYSTEMS

Cybersecurity
Database Technology
Network Administration
and Support Services
Tech Support Services



COMPUTER SCIENCE

Computer Programming
(Visual Basic, C++, Java, SQL, C#)
Game and Simulation Programming
UNIX/Linux



MULTIMEDIA DESIGN

3-D Modeling
Business Software Applications
Digital Video and Sound
Game and Simulation
Graphic Design
Web Design



MORE THAN 20
I.T. INDUSTRY
CERTIFICATIONS



STATE & NATIONAL
RECOGNITION

- National Academy Foundation (NAF) Distinguished Academy
- Magnet Schools of America School of Excellence
- US News and World Report's #1 Most Connected Classrooms
- High performing "A" school on Florida's School Accountability Report



Students have the opportunity to earn an Associate of Arts degree in Information Technology, at no cost to the family, while earning their high school diploma.

2200 West 13th Street | Sanford, FL 32771 | 407-320-5750 | www.cait.scps.k12.fl.us

Apply at [HTTPS://SCPSFLC.SCRIBORDER.COM](https://scpsflc.scriborder.com)

EXPERIENCE WORLD CLASS LEARNING



For highly motivated, college-bound students, the **International Baccalaureate (IB) Diploma Programme** at Seminole High School offers college-level coursework that **provides a distinct competitive edge.**

The program emphasizes independent study, promotes in-depth understanding, and teaches students how to learn, analyze, and reflect on what they know.

Taught by IB trained faculty, the **international college preparatory curriculum** allows students to explore the world from a variety of perspectives.



The IB Diploma Programme has earned a reputation for rigorous assessment, helping IB diploma holders access the world's leading universities and programs.



2701 Ridgewood Avenue | Sanford, FL 32773 | 407-320-5050 | www.seminolehs.scps.k12.fl.us



ADVENTURE AWAITS!



The **International Baccalaureate (IB) Diploma Programme** is ideal for **knowledgeable** and **caring** young people who are **motivated** to grow as individuals through significant academic challenges.

Our IB Diploma Programme has earned a rigorous reputation and is integral in helping **IB graduates access**, and find success, in the **world's leading colleges and universities**.

Our graduates attend such prestigious schools as MIT, Johns Hopkins, Vanderbilt, UF, UCF, FSU, Stetson, and Rollins.

Our **IB students** are **involved** in everything from football, theatre, and leadership to cross country and band.

With 40+ student organizations, 30+ sports, and 11+ certifications - the **sky's the limit** at Winter Springs High School.





How to Apply for a **HIGH SCHOOL MAGNET**

STEP

1

DETERMINE IF YOUR CHILD IS ELIGIBLE TO APPLY FOR A MAGNET SCHOOL.

- Even if your child is zoned to attend a high school where a magnet program exists (i.e. Academy of Engineering at Lyman High School) you **MUST** still submit a magnet application.

STEP

2

SUBMIT THE MAGNET SCHOOL APPLICATION VIA THE ONLINE APPLICATION SYSTEM.

- Apply online at <https://scpsflc.scriborder.com>.
- Students may only apply to one magnet program.
- Confirmation email will be sent upon submission.

STEP

3

RECEIVE A MAGNET SCHOOL NOTIFICATION EMAIL.

- On time lottery applications = school assignment email sent in mid-January each year.
- Based upon limited seat availability, some on time applicants may receive a wait list email.

STEP

4

ACCEPT YOUR CHILD'S MAGNET SCHOOL ASSIGNMENT OR WAIT LIST SEAT VIA THE ONLINE APPLICATION SYSTEM.

- Log into your parent/guardian account at <https://scpsflc.scriborder.com>.
- Accept your student's approved magnet school placement by the stated deadline.

STEP

5

IF ACCEPTED INTO A MAGNET SCHOOL, FAMILIES MUST COMPLETE THE APPROPRIATE STEPS FOR ENROLLMENT.

- Visit **Enrolling Your Student** online: <https://bit.ly/SCPSEnrollmentInfo>
- If the parents/guardians do not enroll their child by the stated deadline, they will be required to submit a new magnet school application and their child will be placed on the wait list.

10TH, 11TH, & 12TH GRADE APPLICANTS:

Acceptance into a magnet school/magnet program is contingent upon a school based administrative review of student transcripts. However, families should still apply through the same online application system.

On Time Application
Period opens

FEBRUARY 1,
2024

HIGH SCHOOL PROGRAMS OF EMPHASIS

- Programs of Emphasis provide a focused area of study centered around a career pathway.
- Students who are zoned for the school may select a Program of Emphasis via course scheduling and should speak with a school counselor.
- A limited number of seats in the programs listed in this guide may be available for 9th-12th grade students who are not zoned to the school.
- Acceptance into a program of emphasis for students applying for grade ten and above is contingent upon a school based administrative review of their transcripts.






	<p>ACADEMY OF ADVANCED LEARNING TECHNOLOGIES (C)</p>	<p>Hagerty High School</p>	<p>The Academy of Advanced Learning Technologies includes programs related to artificial intelligence, modeling & simulation, and computer science. Students participating in one or more of the academy programs will have opportunities to earn industry certifications that will promote post-graduation success in the industry, college/university, and/or military.</p>
	<p>ACADEMY OF FINANCE (C/D)</p>	<p>Lake Brantley High School</p>	<p>The Academy of Finance offers a curriculum comprised of finance and business technology including Accounting Applications and Personal Financial Planning.</p>
	<p>CREATIVE DESIGN & ENTERTAINMENT (C)</p>	<p>Lake Brantley High School</p>	<p>Students who participate in the Creative Design & Entertainment Program have the opportunity to develop their artistic and digital skill sets while preparing for a future career. Currently, the program includes the following pathways: Digital Photography Technology, 3D Animation Technology, Interior Design, and Digital Audio Production.</p>
	<p>CYBERSECURITY (C)</p>	<p>Lake Howell High School</p>	<p>The Cybersecurity program curriculum introduces and prepares students for careers in computer science and cyber-defense in multiple industries.</p>
	<p>BUSINESS & ENTREPRENEURSHIP (C/D)</p>	<p>Lake Howell High School</p>	<p>The Business & Entrepreneurship program curriculum introduces the broad spectrum of business, industry, and small business initiatives. Students will develop the fundamental knowledge and skills necessary to start and operate a business. This program includes opportunities to earn dual enrollment credit or an Associate in Arts degree in Business from Seminole State College.</p>
	<p>CULINARY (C)</p>	<p>Lake Howell High School</p>	<p>The Culinary Arts Program allows students to explore all facets of the culinary field, including entrepreneurship, in an industry-standard commercial kitchen. This program includes industry certification.</p>

C = Program Includes the Potential
for Industry Certification

D = Program Includes the Potential
for Dual Enrollment Credits

P = Pre-Apprenticeship Opportunity

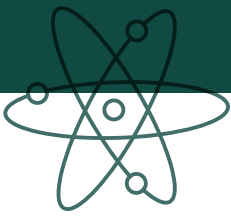
Apply at [HTTPS://SCPSFLC.SCRIBORDER.COM](https://scpsflc.scriborder.com)

	ADVANCED MANUFACTURING & INNOVATION (C)	Lake Mary High School	The Advanced Manufacturing & Innovation program provides students the opportunity to design and prototype innovative products using high-tech, industry standard equipment.
	FORENSIC SCIENCE & LEGAL STUDIES (D)	Lake Mary High School	This program includes two pathways: Forensic Science uses groundbreaking, modern scientific technology in crime scene investigation and Legal Studies teaches the foundations of our legal system.
	ACADEMY OF BUILDING AND DESIGN (C)	Lyman High School	The Academy of Building & Design provides students with the opportunity to explore careers in General Building Trades, Electrical, HVAC/Refrigeration, and Welding. Students will follow a progression of courses aligned with a chosen trade and complete industry-specific course content that will help them obtain employment in the construction industry.
	BIOSCIENCE TECHNOLOGY (C)	Oviedo High School	The Bioscience Technology program prepares students to be successful in career fields of applied biology in various industries. The courses are designed to be predominantly laboratory based with a focus on utilizing bioscience equipment and practicing lab technician skills.
	PROBLEM SOLVING INCUBATOR (C)	Seminole High School	PSI High is a project-based, full-time Program of Emphasis in which students work in a high tech school of the future designed to solve real community, business, and social problems. All students complete the Business Management and Analysis CTE program, earn multiple industry certifications in either digital design, product engineering, or computer application design, and gain direct management experience operating a School-Based Enterprise.
	AVIATION ACADEMY (C/P)	Seminole High School	There are two programs in the academy: the Aviation Maintenance program begins with the FAA Private Pilot Ground School course and certification. The Avionics Systems program introduces students to the high-tech electronics systems aboard an aircraft. Students in each program have access to a pre-apprenticeship training program that provides unique skills-based instruction usually available only to high school graduates in workforce programs.
	RENEWABLE ENERGY (D)	Winter Springs High School	The Renewable Energy program allows students to study energy technologies and the advantages, disadvantages, and limitations of renewable energy resources for a sustainable future.
	PUBLIC SERVICE ACADEMY (C/D)	Winter Springs High School	The Public Service Academy exposes students to the wide variety of career opportunities in government operations and public safety. The program includes three pathway options: Principles of Teaching, Criminal Justice Operations, and Emergency Planning & Response.

C = Program Includes the Potential for Industry Certification

D = Program Includes the Potential for Dual Enrollment Credits

P = Pre-Apprenticeship Opportunity



K-12 SCHOOL TRANSFER OPTIONS

SCPS EMPLOYEE STUDENT TRANSFER

- School choice option permitted under School Board Policy 5120 allows Seminole County Public School employees to bring their children to the site at which they work or to transfer their children to a specifically designated employee transfer school.
- Transportation is not provided.

CAPACITY TRANSFER

- School choice option permitted under School Board Policy 5120 allows students to transfer between designated Over-Capacity schools and designated Under-Capacity schools.
- Transportation is not provided.
- All available options are published annually.

DIVERSITY TRANSFER

- School choice option permitted under School Board Policy 5120 allows student transfers that bring schools closer to the average percentage of students approved for free/reduced price meal benefits at the elementary, middle, and high school levels.
- Transportation is provided to a designated school. Other school choices are without transportation.
- All available options are published annually.

ANNUALLY DEFINED TRANSFERS

- School choice options permitted under School Board Policy 5120 are designed to offer one year educational choice options for families in unique circumstances in an effort to provide educational consistency for students and families.
- Transportation is not provided for these options.
- Academic Year Completion Transfer
- Pending Move Transfer
- Rising 5th, 8th, or 12th Grade Student Transfer
- Sibling of Exceptional Education Student Transfer

CONTROLLED OPEN ENROLLMENT

- School choice option permitted under School Board Policy 5121 which allows students the opportunity to apply to a specifically designated controlled open enrollment Seminole County Public School outside their geographic attendance zone.
- Transportation is not provided.
- All available options are published annually.



HIGH SCHOOL PROGRAMS OF EMPHASIS

- School choice option permitted under School Board Policy 5120 allows a limited number of high school students to pursue a specific area of study that might not be available at their zoned school.
- See page 29-30 for additional details.

MAXIMIZATION TRANSFER

- School choice option permitted under School Board Policy 5120 allows students to transfer between designated Under-Capacity schools and designated greater Under-Capacity schools in order to make the most efficient use of available space and maximize school choice options for families.
- Transportation is not provided.
- All available options are published annually.

INTERESTED IN A VIRTUAL OPTION?

DIVE INTO ADVENTURE!



- Seminole County Virtual School is run by your local, A-rated school district.
- High-quality education along with flexible options to meet the demanding schedule of the 21st-century student.
- Full-time option allows students to earn a regular Florida high school diploma.
- Course offerings include core academics and a variety of electives to keep your student engaged.
- Program of Emphasis in Hospitality and Tourism Management
- Opportunities for acceleration or remediation

450 Technology Park | Lake Mary, FL 32746 | 407-871-7287 | www.scvs.us



Seminole County Public Schools manages a wide variety of student assignment and school choice transfer options in an effort to accommodate family choice to the maximum extent possible while also seeking to minimize overcrowded conditions, promote and maintain diverse student enrollment, support the implementation of ePathways initiatives to the maximum extent possible, and maintain compliance with any state mandates.

These processes and options are guided by School Board policy.

- Policy 5120: SCHOOL STUDENT ATTENDANCE ZONES AND INTERZONE TRANSFERS
- Policy 5121: CONTROLLED OPEN ENROLLMENT

To view comprehensive School Board policy information, please visit <https://go.boarddocs.com/fl/semi/Board.nsf/Public>

REASONABLE ACCOMMODATION(S)

Seminole County Public Schools (SCPS) is committed to serving those that have a disability that may require reasonable accommodation(s). The SCPS Equity and ADA Administrator is available to assist at (407) 320-0148. Qualified applicants are entitled to reasonable accommodation(s) during the application and interview process. Applicants requesting an accommodation may call (407) 320-0231.

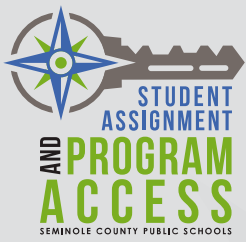
EDUCATIONAL EQUITY – NOTICE OF NONDISCRIMINATION

The Educational Equity Administrator for Seminole County Public Schools has the responsibility of assuring compliance with the educational equity requirements by providing technical expertise, monitoring activities or programs related to compliance, and responding to equity complaints. One of the responsibilities is to administer the Educational Equity Complaint/Grievance Procedures as adopted by the School Board.

It is the policy of the School Board of Seminole County, Florida, that no employee, student, or applicant shall be excluded from participating in, be denied the benefits of, or be subjected to discrimination and/or harassment under any educational programs, activities, or in any employment conditions, policies, or practices conducted by the District.

The School Board does not discriminate on the basis of race, color, national origin, sex (including sexual orientation, transgender status, or gender identity), disability (including HIV, AIDS, or sickle cell trait), pregnancy, marital status, age, religion, ancestry, or genetic information which are classes protected by State and/or Federal law in its programs and activities, including employment opportunities. Additionally, the School board of Seminole County provides equal access to public school facilities for the Boy Scouts of America and other designated youth groups as required by 34 C.F.R. 108.6.

Every employee, student, or applicant for employment at Seminole County Public Schools has a solemn right to be treated fairly, equally, equitably, and with dignity. If for any reason you - the employee, student, or applicant for employment - find that you have been victimized by acts of discrimination and or harassment, whether intentional or unintentional, you are strongly encouraged to file an Educational Equity Complaint or Grievance with the Educational Equity Administrator, or any county or school-level administrator. All such complaints must be immediately forwarded to the Educational Equity Administrator for dissemination, action, and resolution. Forward to: SCPS Educational Equity Administrator, Seminole County Public Schools, Educational Support Center, 400 E. Lake Mary Blvd., Sanford, FL 32773-7127. 407.320.0148.



Educational Support Center
400 East Lake Mary Boulevard
Sanford, FL 32773



2024-2025

FOR MORE INFORMATION CONTACT

Student Assignment and
Program Access Department

Educational Support Center
400 East Lake Mary Boulevard
Sanford, FL 32773

407-320-0329
www.seminoleschoolchoices.us



Apply at [HTTPS://SCPSFLC.SCRIBORDER.COM](https://scpsflc.scriborder.com)